

Perfect Budgeting System

This system setting up the company budget, with respect to the operational and administrative expenses. In addition, it can process required staff for the company. It links the staff with there needs from assets and other exponders such as salaries, insurance ...e.t.c.

Main features:

Flexible

- Defines a budget for any period.
- Any budget may contain any number of sub periods (e.g. quarters).
- Getting approvals for sub periods (quarters).
- Budget re-forecasting.

Budget expenses are defined in two main streams:

- a. Operational and Administration Expenses (OE).**
- b. Capital Expenses (CE).**

Each department enters its estimated budget (OE, CE) in the budgeting per month. Once the budget entries from different departments are completed the budget can be approved, rejected, and modified. Then a total budget figures and amount shall be seen in the system, per department, asset types, employees, ..etc.. Any budget can be forecasted more than one time. Again this can be done on the department levels and periods. Since the system is monthly basis it can also group the months into periods. Any period can contain any number of commence months.

On the other hand, budget is deduced using purchase request or purchase

invoice vouchers by authorized user on the level of department and accounts. At the same time the deduction can be per amount of money or/and per quantities (i.e # of PC..). Consequently, the over budget approvals needs special arrangement (throw out managers). If the budget amount in a specific period (say 1,2,3, months) is not totally used (consumed, deduced), the system has two options either it can transfer the amount and quantities to the next coming periods or it can ignore it (i.e. cancelling the other amount).

This gives the system more flexibility.

The budgeting module is linking (on-line) with payroll, assets, purchasing, and general ledger modules.

System General Features:

Technology

- Database – Microsoft SQL Server 2000 or later or My SQL (free) , or Oracle & or later.
- Programming Languages – Java J2EE version 1.6
- Web Development Tools: HTML, Servlets, WAP and J2ME, JSP

User Interface

- Provide Arabic / English User Interface and reporting.
- Ease of use and navigation by inexperienced users, and hot-key functions for experienced users (i.e. user friendly). The Navigation done by mouse clicks and by using tabs.
- Menu driven.
- Graphical user interface GUI.
- Menus, screens, and fields are clear and readable, and visible by normal user.
- Navigation between menus and screens are logically and flawlessly.

User Friendly:

- The package is windows-based application, which includes menus, icons and looks up table, thus provides a user-friendly interface.
- The menus are designed in a way that facilitates the use of the system, so that each module has its own menu and sub menu.
- Look up tables enables the user to add new records and modify existing ones within the system without having to interrupt the transaction processing.
- Pop up calendar and calculator.
- Select accounts, vendors, and customers from drop down list.

System availability:

The package is available 24 hours 7 days a week and 360 days a year. This is due to the fact that most maintenance and support operations can be done while the system is running like backup operation. Further more, there is no need to stop the system in order to get any report.

Help & Manuals:

The package has a User manual and Technical manual. Both are available as a soft and hard copies.

Web Enabled:

The package is Web enabled. Therefore, it works on WAN and LAN, without extra setup or installation, just using Internet Browser.

Open Systems

ASD Systems operates on any operating system like UNIX, Linux, Windows, etc...

External Interfaces:

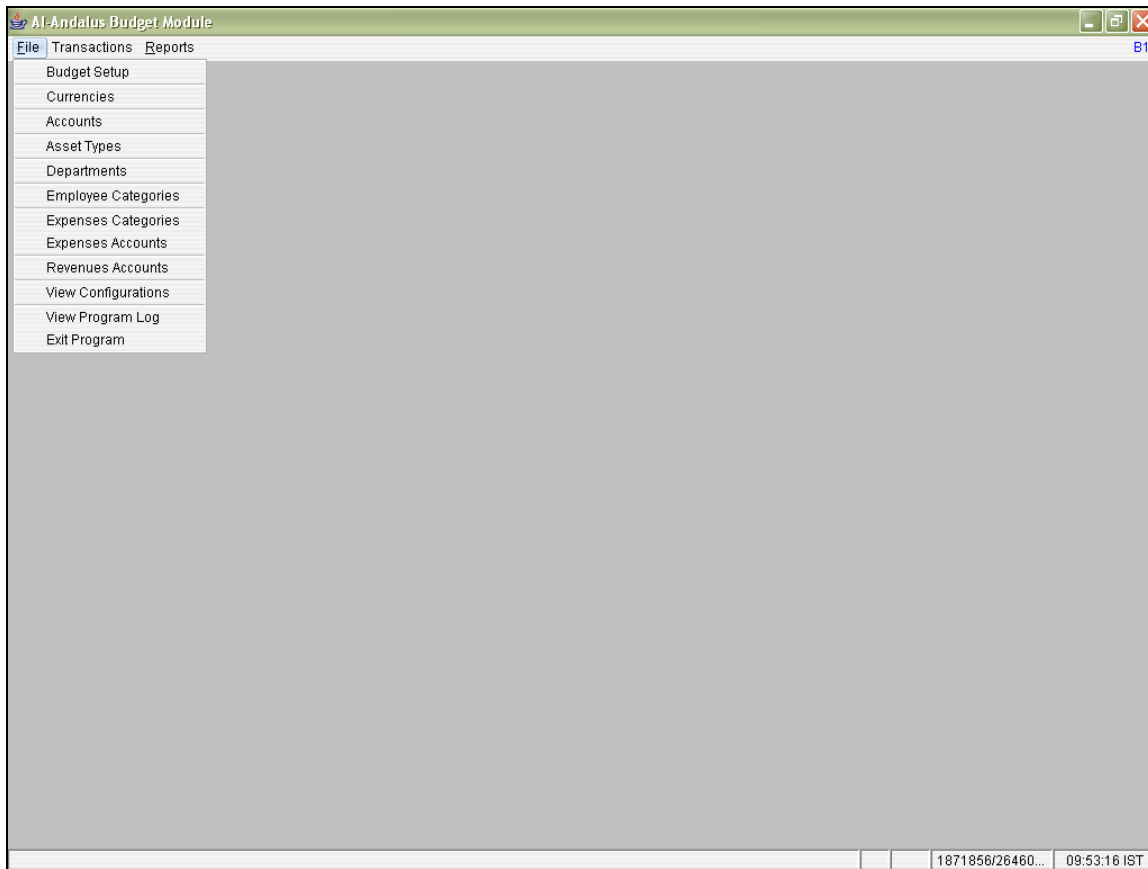
- Provide interfaces capabilities with either a proprietary or third party PC Spreadsheet and word processing packages.
- Ability to import the chart of account information from third party spreadsheet and database packages (e.g. Excel, Microsoft Access, ...)

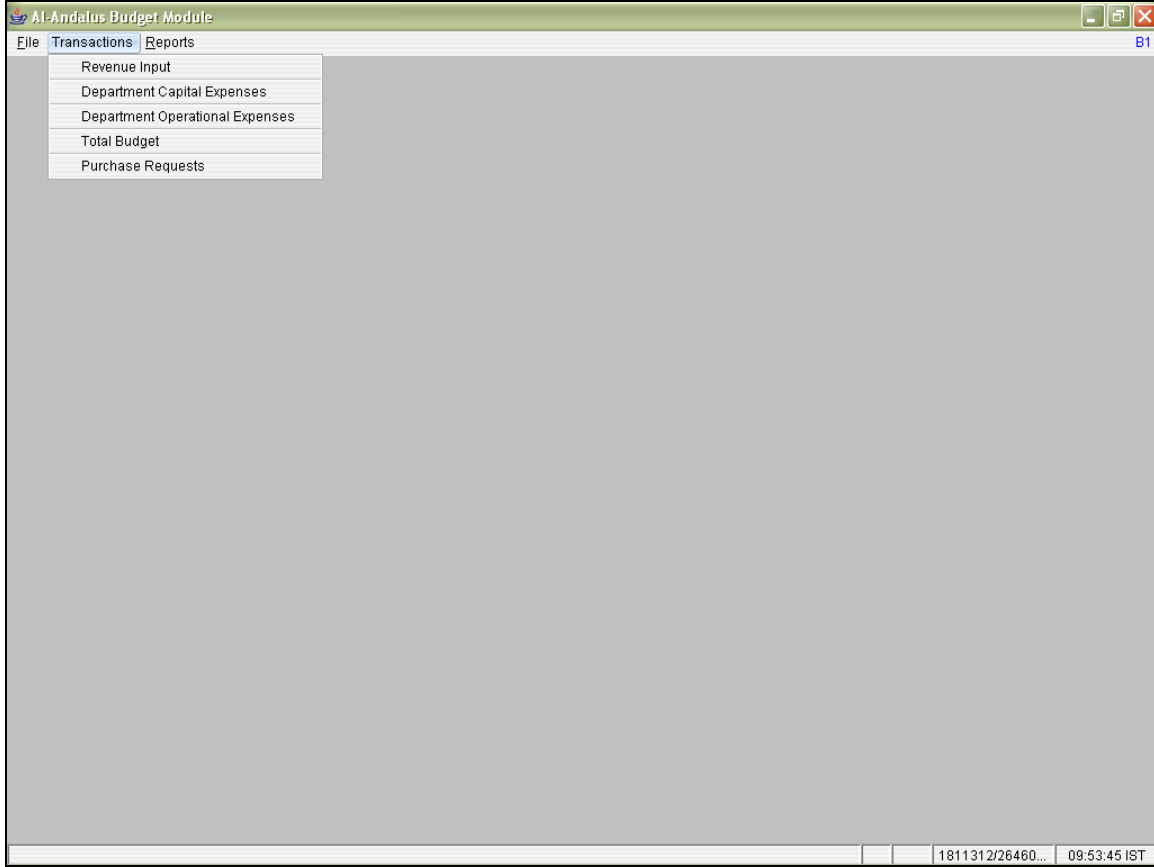
Integration:

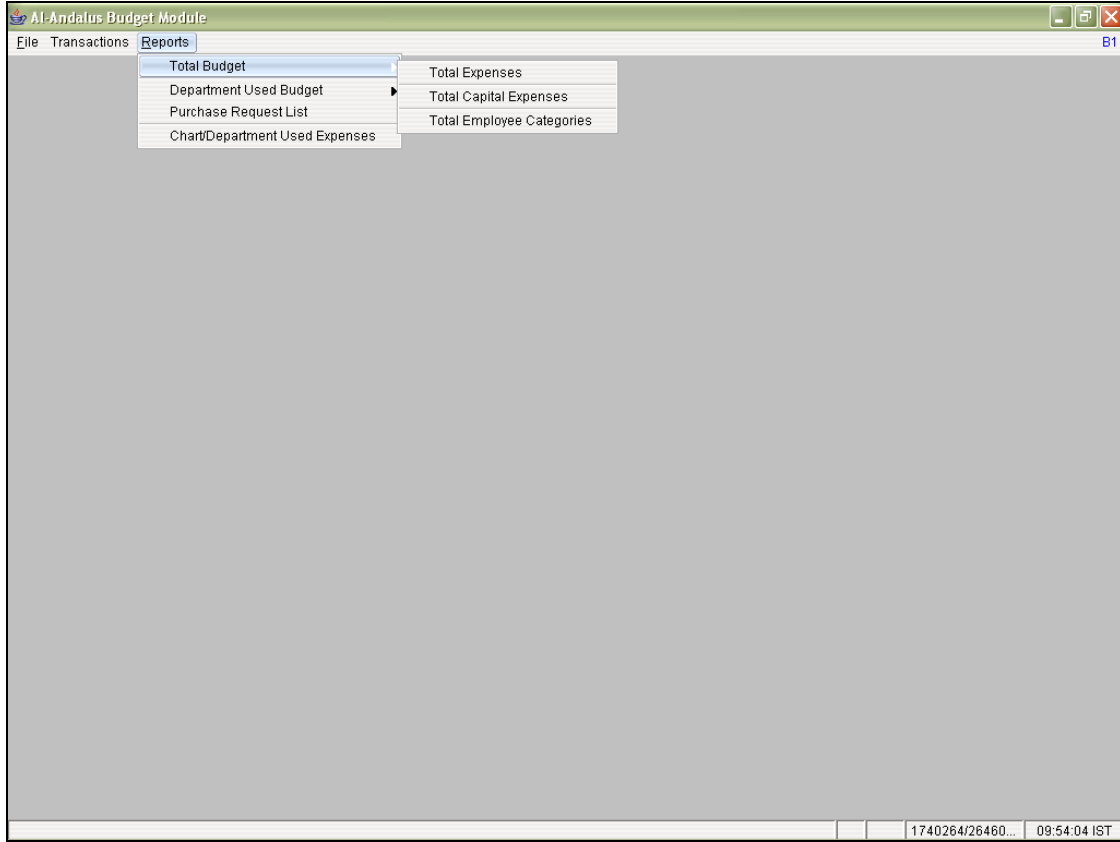
Ability to integrate all systems together according to best practices and integrate them with General Ledger and other packages.

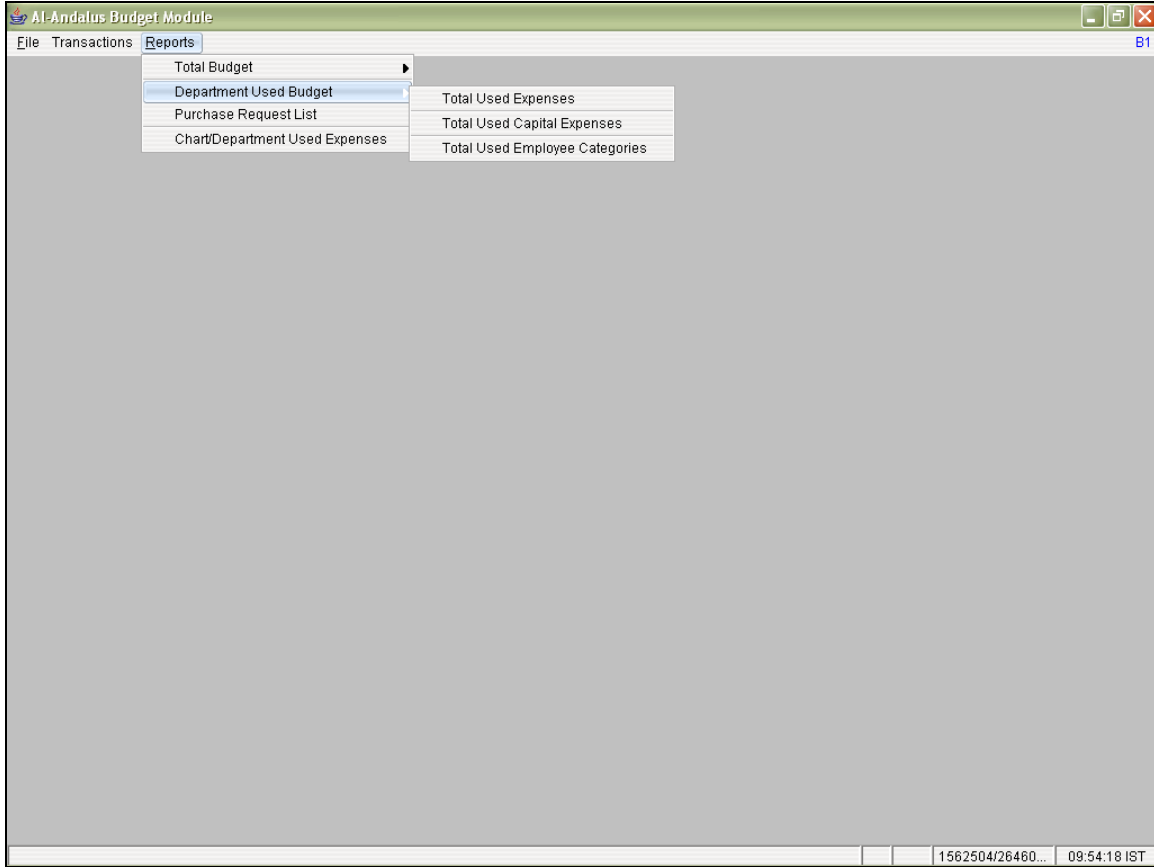
Data Backup and Restore:

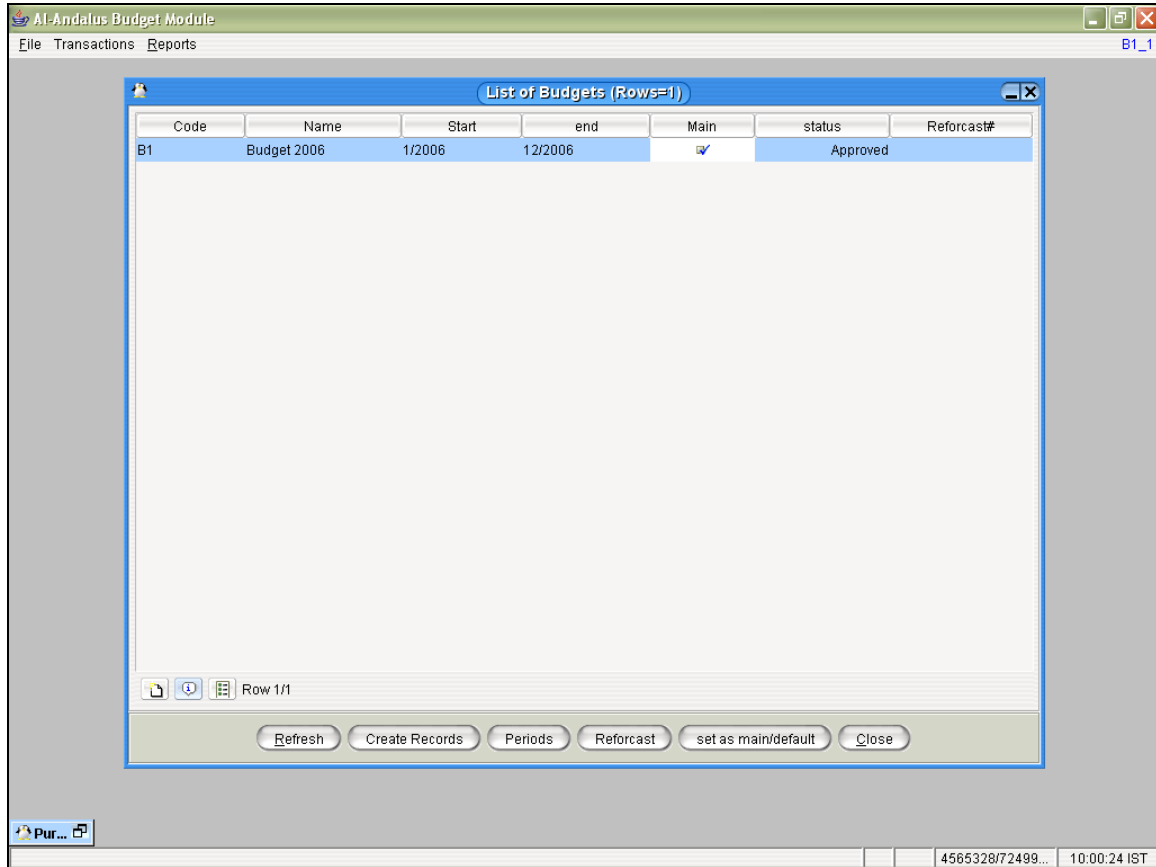
The system database and files can be easily backup and restores throw DBMS and other commands. Thus, ensuring no lost of data.











Al-Andalus Budget Module

File Transactions Reports B1

Budget/Capital Expenses - شركة الأندلس للبرمجة وتكنولوجيا النظم / Date : 5/2/2007 9:54 User : SA User SA

Type: Budget/Capital Expenses Reforcast#: 0 Status: Posted

J Code: A Voucher#: 1 Date: 1/1/2006

Currency: USD - USA Dollar Rate: 4.64000 User: SA

Department: D01 Finance Department Budget: B1

Code	Name	Jan 2006	Feb 2006	Mar 2006	Apr 2006	May 2006	Jun 2006	Jul 2006	Aug 2006	Sept 2006	Oct 2006	Nov 2006	Dec 2006	Total	Pr
F01	Furniture/Charis	0.00	0.00	0.00	400.00	0.00	0.00	50.00	0.00	0.00	0.00	0.00	0.00	450.00	
OF012	Office Equipments/Computers/PC	0.00	6000.00	0.00	0.00	0.00	0.00	0.00	0.00	0.00	0.00	0.00	0.00	6000.00	
OF3	Office Equipments/Photo copires	0.00	0.00	0.00	0.00	0.00	1500.00	0.00	0.00	0.00	0.00	0.00	0.00	1500.00	
F02	Furniture/Tables	0.00	150.00	0.00	0.00	1000.00	0.00	0.00	0.00	0.00	0.00	60.00	0.00	1210.00	

.....

Remark:

Comment:

Vehicle#:

Time:

Total: 9160.00

print Close

3290000.38090... 03:50:07 151

Perfect BudgetingSystem-Arabic.doc - Microsoft Word

Budget/Oper Expenses - شركة لاندلس للبرمجة وتكنولوجيا النظم - User SA

Type: **Budget/Oper Expenses** Recorcast# 0 Status: **Posted**

J Code: A Voucher#: 1 Date: 1/1/2006

Currency: USD - USA Dollar Rate: 4.64000 User: SA

Department: D01 Finance Department Budget: B1

Employees Expense A/C Employee new Assets

Code	Name	Jan 2006	Feb 2006	Mar 2006	Apr 2006	May 2006	Jun 2006	Jul 2006	Aug 2006	Sept 2006	Oct 2006	Nov 2006	Dec 2006	Total	Priority
D2	Department manager	0.00	0.00	0.00	0.00	0.00	0.00	0.00	0.00	0.00	0.00	0.00	0.00	0.00	

Row 1/1

Remark:

Comment:

Vehicle#:

Time:

Total(Employees): 0.00

Total(Expenses): 290.00

Total(Capital): 1800.00

Print Close

Page 5 Sec 1 5/5 At 13.9cm Ln 2 Col 1 REC | TRK | EXT | OVR | English (U.S)

Al-Andalus Budget Module

File Transactions Reports

Budget/Oper Expenses - شركة لاندلس للبرمجة وتكنولوجيا النظم - User SA

Type: **Budget/Oper Expenses** Recorcast# 0 Status: **Posted**

J Code: A Voucher#: 1 Date: 1/1/2006

Currency: USD - USA Dollar Rate: 4.64000 User: SA

Department: D01 Finance Department Budget: B1

Employees Expense A/C Employee new Assets

Code	Name	Jan 2...	Feb 2006	Mar 2006	Apr 2006	May 2006	Jun 2006	Jul 2006	Aug 2006	Sept 2006	Oct 2006	Nov 2006	Dec 2006	Total	Priority
110862	مصاريق جوان	0.00	100.00	0.00	0.00	0.00	0.00	0.00	0.00	0.00	100.00	0.00	50.00	250.00	
11088	مصاريق كدريب	0.00	0.00	0.00	0.00	0.00	0.00	0.00	0.00	0.00	0.00	0.00	0.00	0.00	
11087	مصاريق فرق عمله	0.00	0.00	0.00	0.00	0.00	40.00	0.00	0.00	0.00	0.00	0.00	0.00	40.00	

.....

Remark:

Comment:

Vehicle#:

Time:

Total(Employees): 0.00

Total(Expenses): 290.00

Total(Capital): 1800.00

print Close

4101888/59801... 09:56:09 IST

Perfect BudgetingSystem-Arabic.doc - Microsoft Word

Budget/Oper Expenses - شركة لاندلس للبرمجة وتكنولوجيا النظم - User SA

Type: **Budget/Oper Expenses** Recorcast# 0 Status: **Posted**

J Code: A Voucher#: 1 Date: 1/1/2006

Currency: USD - USA Dollar Rate: 4.64000 User: SA

Department: D01 Finance Department Budget: B1

Employees | Expense A/C | Employee new Assets

Code	Name	Jan 2006	Feb 2006	Mar 2006	Apr 2006	May 2006	Jun 2006	Jul 2006	Aug 2006	Sept 2006	Oct 2006	Nov 2006	Dec 2006	Total	Priority
F01	Furniture/Charis	200.00	0.00	0.00	0.00	0.00	0.00	0.00	0.00	0.00	0.00	0.00	0.00	200.00	
F02	Furniture/Tables	400.00	0.00	0.00	0.00	0.00	0.00	0.00	0.00	0.00	0.00	0.00	0.00	400.00	
OF0...	Office Equipments/Computers/PC	1200.00	0.00	0.00	0.00	0.00	0.00	0.00	0.00	0.00	0.00	0.00	0.00	1200.00	

Row 1/3

Remark:

Comment:

Vehicle#:

Time:

Total(Employees): 0.00

Total(Expenses): 290.00

Total(Capital): 1800.00

Print Close

Page 7 Sec 1 7/7 At 2.5cm Ln 1 Col 2 REC | TRK | EXT | OVR | English (U.S)

AI-Andalus Budget Module

File Transactions Reports

B1_1

Total Budget

Expenses Assets Employees

Code	Name	Jan 2006	Feb 2006	Mar 2006	Apr 2006	May 2006	Jun 2006	Jul 2006	Aug 2006	Sept 2006	Oct 2006	Nov 2006	Dec 2006	Total
11088	مصاريف كدرب	0.00	0.00	0.00	0.00	0.00	0.00	0.00	0.00	0.00	0.00	0.00	0.00	0.00
110862	مصاريف جوال	0.00	100.00	0.00	0.00	0.00	0.00	0.00	0.00	0.00	100.00	0.00	50.00	250.00
11087	مصاريف فرق عملة	0.00	0.00	0.00	0.00	0.00	40.00	0.00	0.00	0.00	0.00	0.00	0.00	40.00

Row 3/3

Total(Employees)

Total(Expenses) From Dept

Total(Assets)

4412184/59801... 09:58:14 IST

AI-Andalus Budget Module

File Transactions Reports B1_1

Total Budget

Expenses Assets Employees

Code	Name	Jan 2006	Feb 2006	Mar 2006	Apr 2006	May 2006	Jun 2006	Jul 2006	Aug 2006	Sept 2006	Oct 2006	Nov 2006	Dec 2006	Total
F01	Furniture/Charis	200.00	0.00	0.00	400.00	0.00	0.00	50.00	0.00	0.00	0.00	0.00	0.00	650.00
F02	Furniture/Tables	400.00	150.00	0.00	0.00	1000.00	0.00	0.00	0.00	0.00	0.00	60.00	0.00	1610.00
OF012	Office Equipments/Computers/PC	1200.00	6000.00	0.00	0.00	0.00	0.00	0.00	0.00	0.00	0.00	0.00	0.00	7200.00
OF3	Office Equipments/Photo copires	0.00	0.00	0.00	0.00	0.00	1500.00	0.00	0.00	0.00	0.00	0.00	0.00	1500.00

Total(Employees)

Total(Expenses) From Dept

Total(Assets)

4399536/59801... 09:58:38 IST

Al-Andalus Budget Module B1_1

File Transactions Reports

Total Budget

Expenses | Assets | Employees

Code	Name	Jan 2006	Feb 2006	Mar 2006	Apr 2006	May 2006	Jun 2006	Jul 2006	Aug 2006	Sept 2006	Oct 2006	Nov 2006	Dec 2006	Total
D2	Department manager	0.00	0.00	0.00	0.00	0.00	0.00	0.00	0.00	0.00	0.00	0.00	0.00	0.00

Row 1/1

Total(Employees)

Total(Expenses) From Dept

Total(Assets)

4734536/59801... 09:59:07 IST

Al-Andalus Budget Module

File Transactions Reports

B1_1

List of Purchase Request

JCode:

From Dep: To Dep:

From Voucher#: To Voucher#:

Approval Status:

Only need Approval:

JCode	Voucher#	Date	Dept	Original Balance	Current Balance	Over Budget	Status	Approval User	need Approval	Comments	Type
A	4502/01/2006	2006/01/02	D01	140.0000	0.0000	0.0000	Pending		<input type="checkbox"/>		Unspecified
A	3415/01/2006	2006/01/15	D01	600.0000	0.0000	0.0000	Pending		<input type="checkbox"/>		Unspecified

Row 1/2

Refresh Approve Reject View Details Close

4886472/59801... 09:59:40 IST